



**alpine-property**

Alpine Property SAS au capital de 3 450 € - RCS Thonon les Bains 508 578 556 - siège: 153 chemin du Chargeau, 74110 Morzine, France - Titulaire de la Carte Professionnelle n° CPI 7401 2016 000 017 391 délivrée par la CCI de la Haute Savoie

Tel: +44 (0)208 123 2384

Email: [info@alpine-property.com](mailto:info@alpine-property.com)

Web: [www.alpine-property.com](http://www.alpine-property.com)

# Chalet Le Fayet

**Abondance, Châtel & Vallée, Portes Du Soleil**

**880 000 €uros**



## Contact

Contact **Ed Ockelton** about this property.

**Tel:** +33 6 77 83 19 98

**Email:** [ed@alpine-property.com](mailto:ed@alpine-property.com)

# Key Features

<b>Price</b>	880 000 Euros
<b>Status</b>	FOR SALE
<b>Last updated</b>	02/05/2024
<b>Area</b>	Portes Du Soleil
<b>Location</b>	Châtel & Vallée
<b>Village</b>	Abondance
<b>Bedrooms</b>	4
<b>Bathrooms</b>	2
<b>Floor area</b>	154 m²
<b>Land area</b>	2167 m²
<b>Detached</b>	Yes
<b>Heating</b>	Heat pump
<b>Chimney</b>	Wood burning stove
<b>Nearest skiing</b>	540 m
<b>Nearest shops</b>	800 m
<b>Garage</b>	Single
<b>Drainage</b>	Mains drains
<b>Energy efficiency rating</b>	TBC
<b>CO2 emissions</b>	TBC
<b>Agency fees</b>	Paid by the seller

## Property Description

We are delighted to offer for sale a brand new, off plan chalet, built to high specifications by one of the areas most respected local builders.

The chalet will adhere to the latest energy efficiency regulations, and its heat pump fueled underfloor heating and state-of-the-art insulation and windows will ensure the property is economic to run.

Built over three floors the chalet will be arranged as follows;

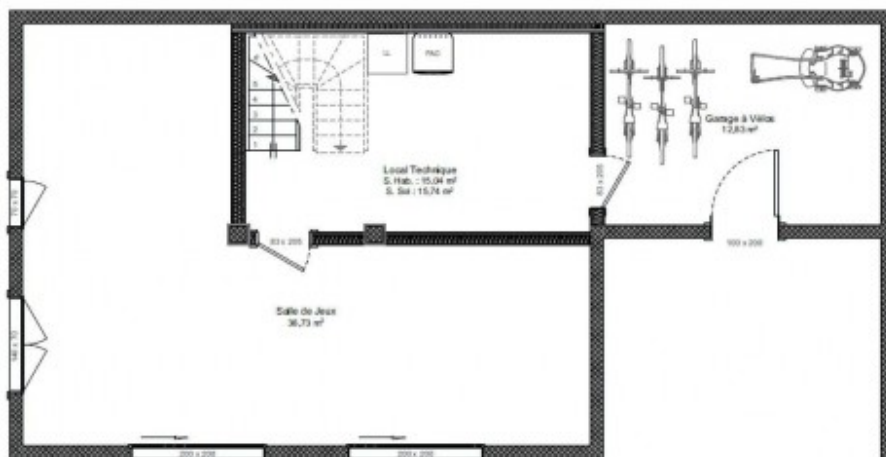
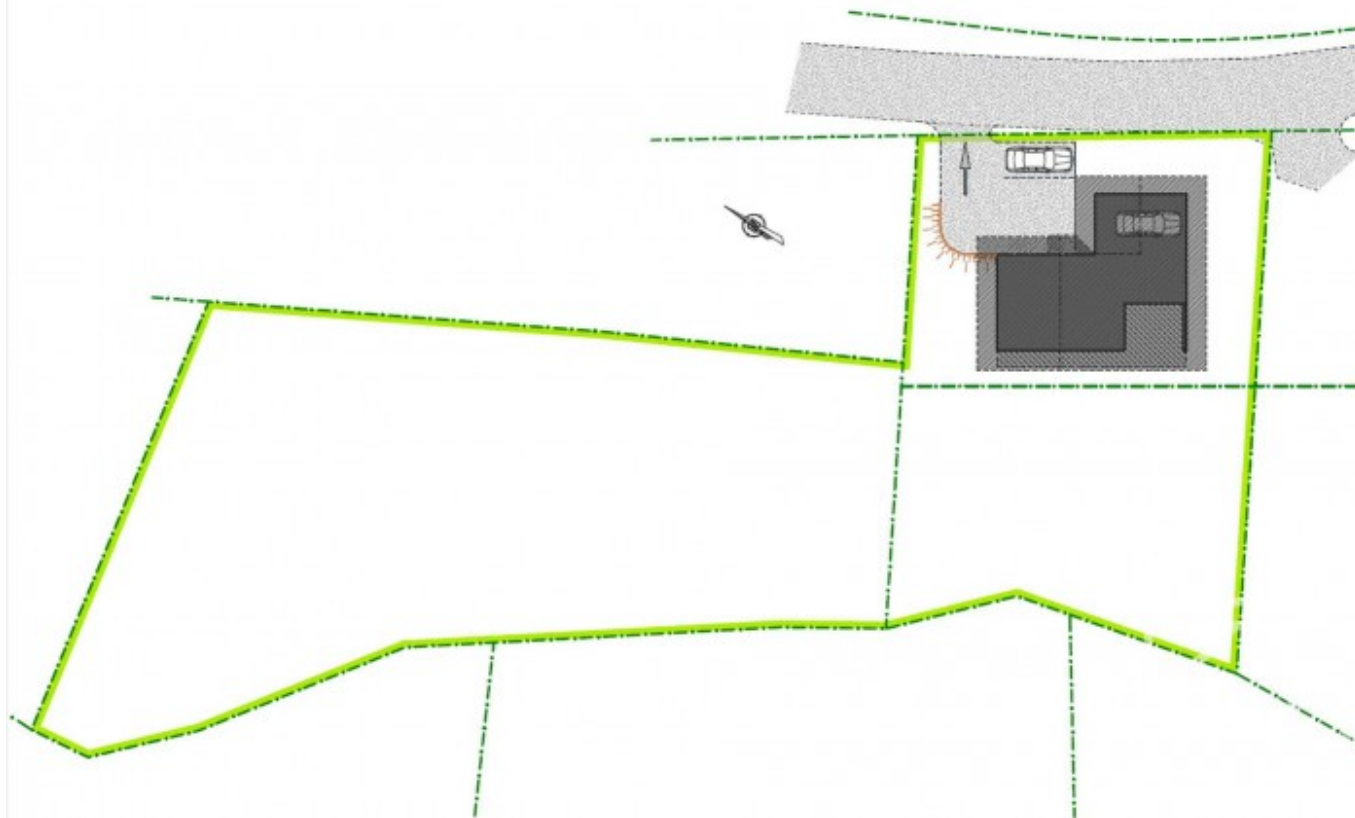
On the top floor, three double bedrooms, bathroom with bath & shower, separate toilet.

On the ground floor, open plan living, dining & kitchen area with fully fitted kitchen, double bedroom with ensuite shower room, separate toilet, entrance hall with storage cupboard, garage.

On the lower ground floor, bike/ski storage room, technical room, games room (can also be finished as an extra bedroom/bathroom if required).

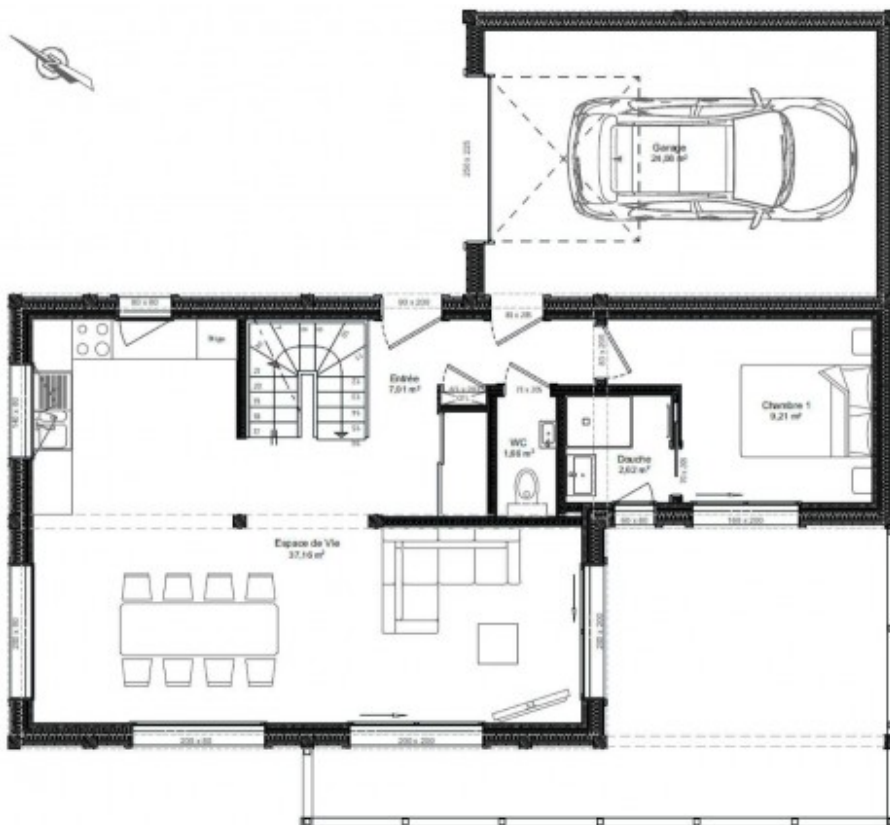
Buyers have the chance to customise the layout to suit their requirements

The chalet will be built on a pleasant, sunny plot of 2167 sq m, not far from the centre of Abondance.



Surfaces Habitables			
	Pièces	Surfaces Habitables	Surfaces au Sol
<b>Rez-de-Jardin</b>			
	Local Technique	15,04	15,74
	Salle de Jeux	36,73	36,73
		51,77 m²	52,47 m²
<b>Rez-de-Chaussée</b>			
	Chambre 1	9,21	9,21
	Douche	2,62	2,62
	Entrée	7,01	7,01
	Espace de Vie	37,16	37,16
	WC	1,66	1,66
		57,66 m²	57,66 m²
<b>Etage</b>			
	Bains	5,85	5,85
	Chambre 2	9,13	9,13
	Chambre 3	12,00	12,00
	Chambre 4	12,00	12,00
	Dgt	3,71	3,71
	WC	1,66	1,66
		44,35 m²	44,35 m²
		153,98 m²	154,68 m²

Surfaces Garage	
Identifications	Surfaces
<b>Rez-de-Jardin</b>	
Garage à Vélos	12,83
	12,83 m²
<b>Rez-de-Chaussée</b>	
Garage	24,08
	24,08 m²
	36,91 m²



Surfaces Habitables			
	Pièces	Surfaces Habitables	Surfaces au Sol
<b>Rez-de-Jardin</b>			
	Local Technique	15.04	15.74
	Salle de Jeux	36.73	36.73
		51.77 m²	52.47 m²
<b>Rez-de-Chaussée</b>			
	Chambre 1	9.21	9.21
	Douche	2.62	2.62
	Entrée	7.01	7.01
	Espace de Vie	37.16	37.16
	WC	1.66	1.66
		57.66 m²	57.66 m²
<b>Etage</b>			
	Bains	5.85	5.85
	Chambre 2	9.13	9.13
	Chambre 3	12.00	12.00
	Chambre 4	12.00	12.00
	Dgi	3.71	3.71
	WC	1.86	1.86
		44.55 m²	44.55 m²
		<b>153.98 m²</b>	<b>154.68 m²</b>

Surfaces Garage		
	Identifications	Surfaces
<b>Rez-de-Jardin</b>		
	Garage à Vélos	12.83
		12.83 m²
<b>Rez-de-Chaussée</b>		
	Garage	24.06
		24.06 m²
		<b>36.91 m²</b>



Surfaces Habitables			
	Pièces	Surfaces Habitables	Surfaces au Sol
<b>Rez-de-Jardin</b>			
	Local Technique	15.04	15.74
	Salle de Jeux	36.73	36.73
		51.77 m²	52.47 m²
<b>Rez-de-Chaussée</b>			
	Chambre 1	9.21	9.21
	Douche	2.62	2.62
	Entrée	7.01	7.01
	Espace de Vie	37.16	37.16
	WC	1.66	1.66
		57.66 m²	57.66 m²
<b>Etage</b>			
	Bains	5.85	5.85
	Chambre 2	9.13	9.13
	Chambre 3	12.00	12.00
	Chambre 4	12.00	12.00
	Dgi	3.71	3.71
	WC	1.86	1.86
		44.55 m²	44.55 m²
		<b>153.98 m²</b>	<b>154.68 m²</b>

Surfaces Garage		
	Identifications	Surfaces
<b>Rez-de-Jardin</b>		
	Garage à Vélos	12.83
		12.83 m²
<b>Rez-de-Chaussée</b>		
	Garage	24.06
		24.06 m²
		<b>36.91 m²</b>





















